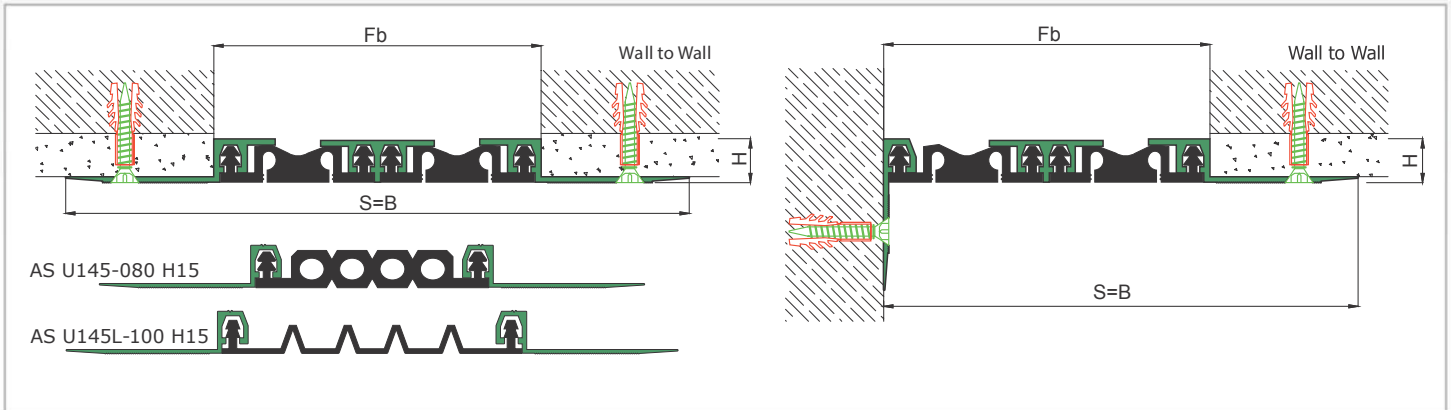
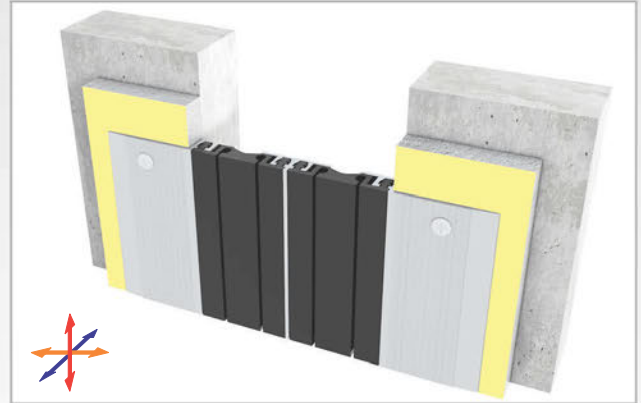
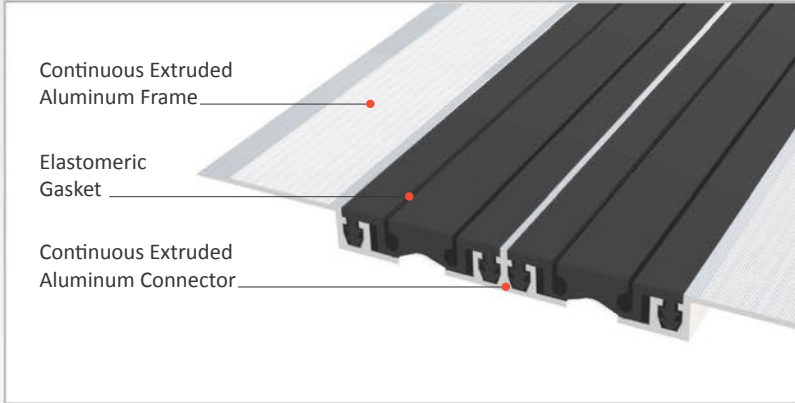




AS U145 surface mounted profile can easily be installed by means of screws to all types of wall & ceiling. Push-down elastomeric gasket can be changed without demounting the profile. Profiles up to 80 mm gap are manufactured with single gasket while the wider ones are with double gaskets joined with a connector profile. For some gaps, profile can be applied with floor type AS U245 as a dual application chamfered edges and pin striped covers give the profile a decorative aspect.

- Application Areas** : Indoor / Wall & Ceiling
- Ideal for** : Shopping Malls, Airports, Residences, Hospitals, Hotels, Commercial & Public Buildings etc
- Material** : Mill Finish Aluminum (Anodizing optional), TPE Gasket
- Aluminum Alloy** : 6063 AA-USA / EN AW 6063
- Optional Supplies** : Fire Barrier, Waterproof EPDM membrane

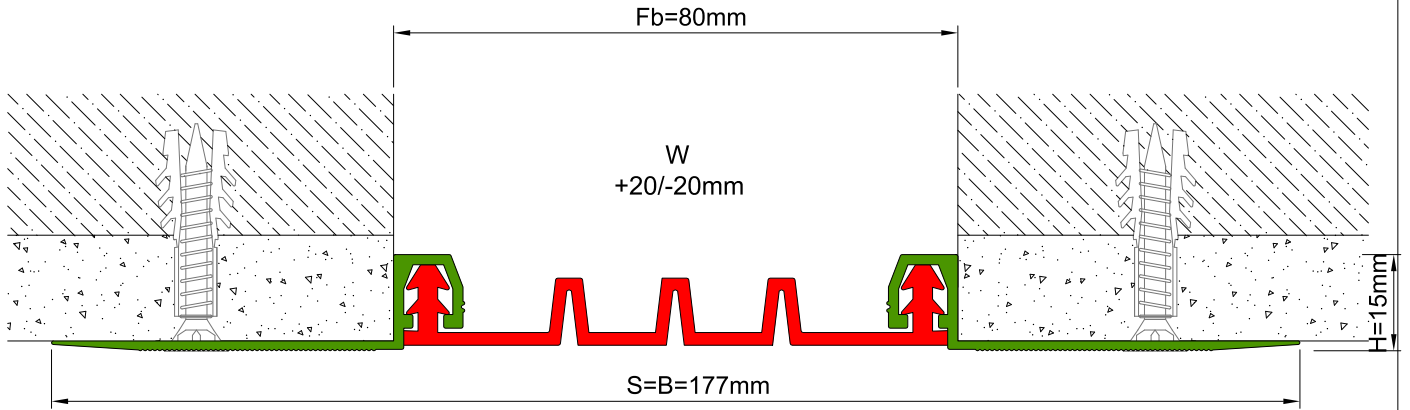
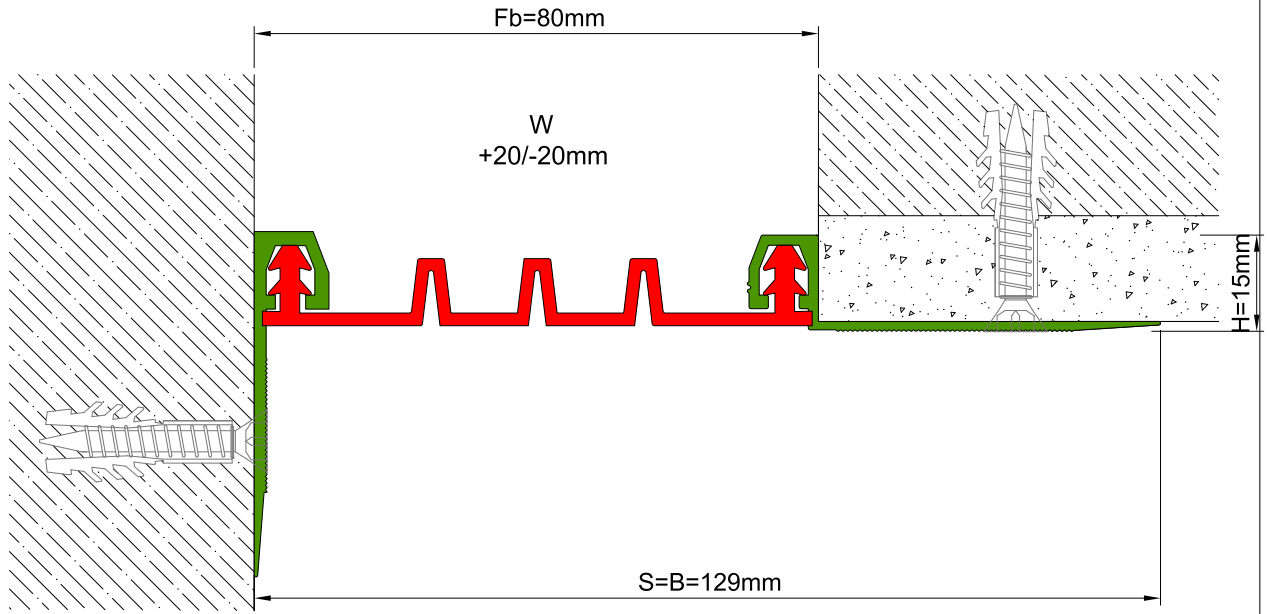


\* Visuals are representative and the profile configuration may differ depending on the characteristics requested.

GASKET COLORS    **BLACK**    GREY    **BEIGE**    Custom Colors available.

LOCATION	MODEL	GAP (Fb) mm	HEIGHT (H) MM	OVERALL WIDTH (B) mm	VISIBLE WIDTH (S) mm	MOVEMENT (W) mm	LOAD CAPACITY	STANDARD LENGTH (mt)
Wall to Wall	AS U145-030	30	15	127	127	± 5	N/A	3
	AS U145-050	50	15	147	147	± 7	N/A	3
	AS U145-080	80	15	177	177	± 10	N/A	3
	AS U145-100	105	15	189	189	± 14	N/A	3
	AS U145 L-050	50	15	147	147	+16 / -8	N/A	3
	AS U145 L-080	80	15	177	177	± 20	N/A	3
	AS U145 L-100	100	15	189	189	+30 / -20	N/A	3

Note: Please ask for different sizes


 AS U145L 080  
 H15V

 AS U145L 080  
 H15KV

Profil No Profile Number	AS U145L 080	AS U145L 080K
Fb (mm)	80	80
H (mm) yaklaşık approx.	15	15
W± (mm) yaklaşık approx.	+20/-20	+20/-20
Renk Color	Alüminyum: Natürel, Fitiller: Siyah, gri, diğer Aluminum: Natural, Inserts: Black, grey, others	
Malzeme Material	Alüminyum, TPE Termoplastik Elastomer Aluminum, TPE Thermoplastic Elastomer	
Standart Uzunluk Standard Length	3	